

Embossing on Gourds

Bill Tarlton

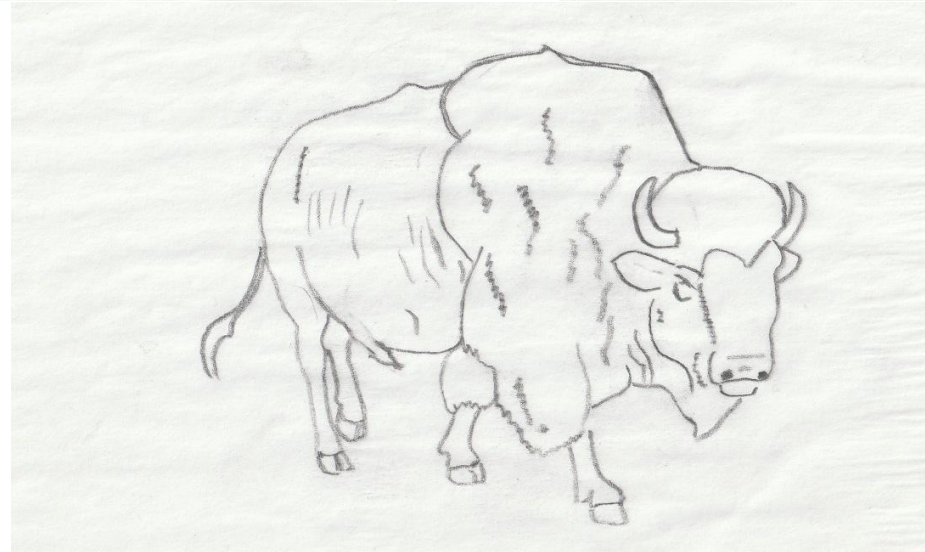
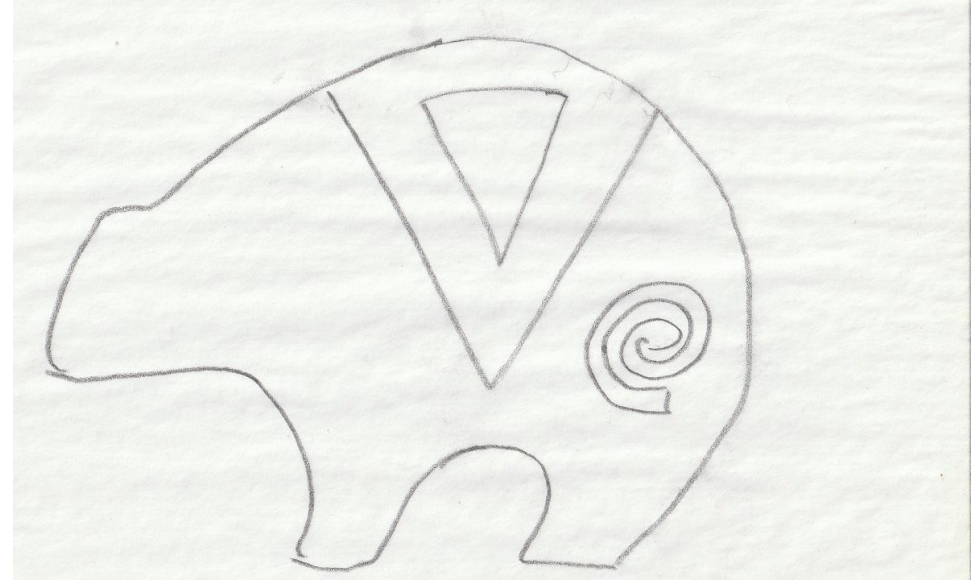
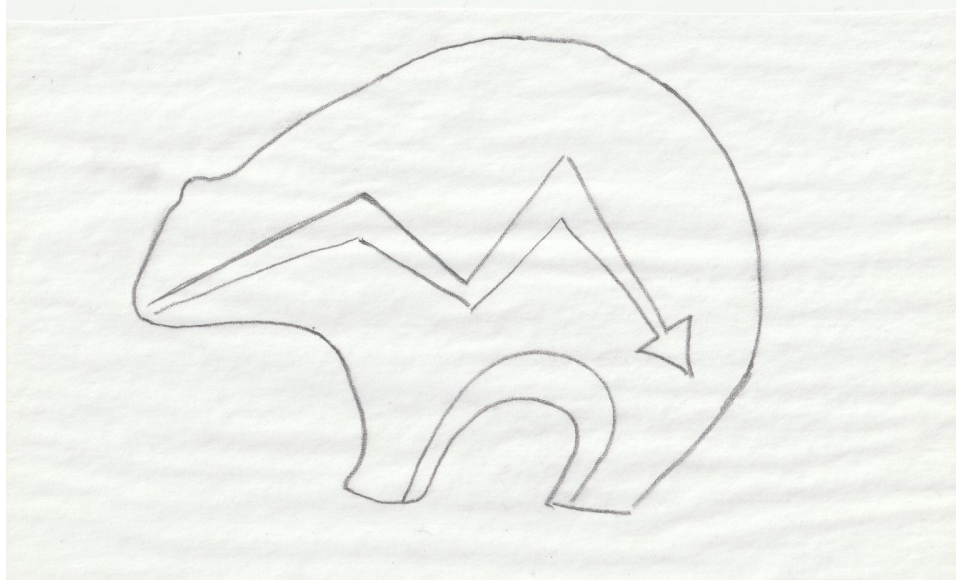
Practice Pigment Powder On Shard

- **Pick Area to Color – Make two 1"x1.5" Rectangle Boxes With Your Burner**
- **Apply Heat Activated Glue Inside one of the Boxes (Either Black or Clear)**
- **Heat the Glue With Heat Gun (Sheen Will Fade)**
- **Apply Powder With a Brush – Tap Off Excess Powder**
- **Use a Clean Brush to Remove Powder From Outside the Lines**
- **The Color is Now Set and Ready to Seal**

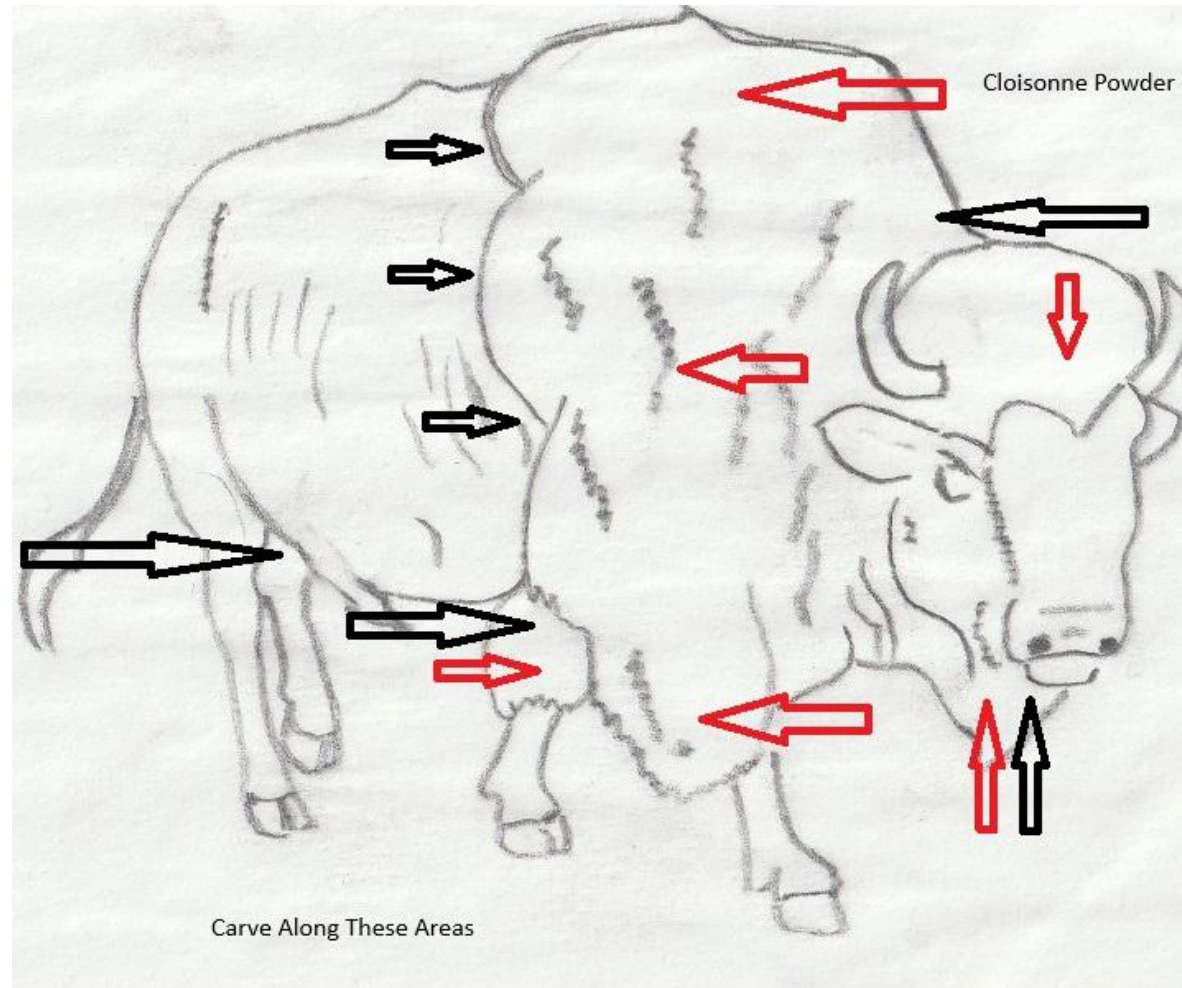
Practice Cloisonne Powder on Shard

- **Work in the Second Box**
- **Apply Heat Activated Glue To Select Area**
- **Apply Cloisonne Powder (Place Paper Under Work Area To Capture Excess)**
- **Remove Excess From Outside the Lines With Clean Brush**
- **Apply Heat (More Heat Equals Larger Bubbles)**
- **Remove Any Excess With Hobby Knife**
- **Notes: Cloisonne Powder Will Bubble Higher Than Embossing Powder**
 - **Hide Bad Stains and Blotches With Cloisonne**
 - **Great For Rims and Other Embellishments**
 - **Can Be Double Applied to Create More Dimension**
 - **Powder Colors Can Be Mixed to Attain Desired Outcome**
 - **Clear Glue and Clear Powder Will Reflect the Base Color**
 - **You can purchase Cloisonne Powder on Amazon by searching for “Stampendous Frantage Embossing Enamels” ~ \$7**

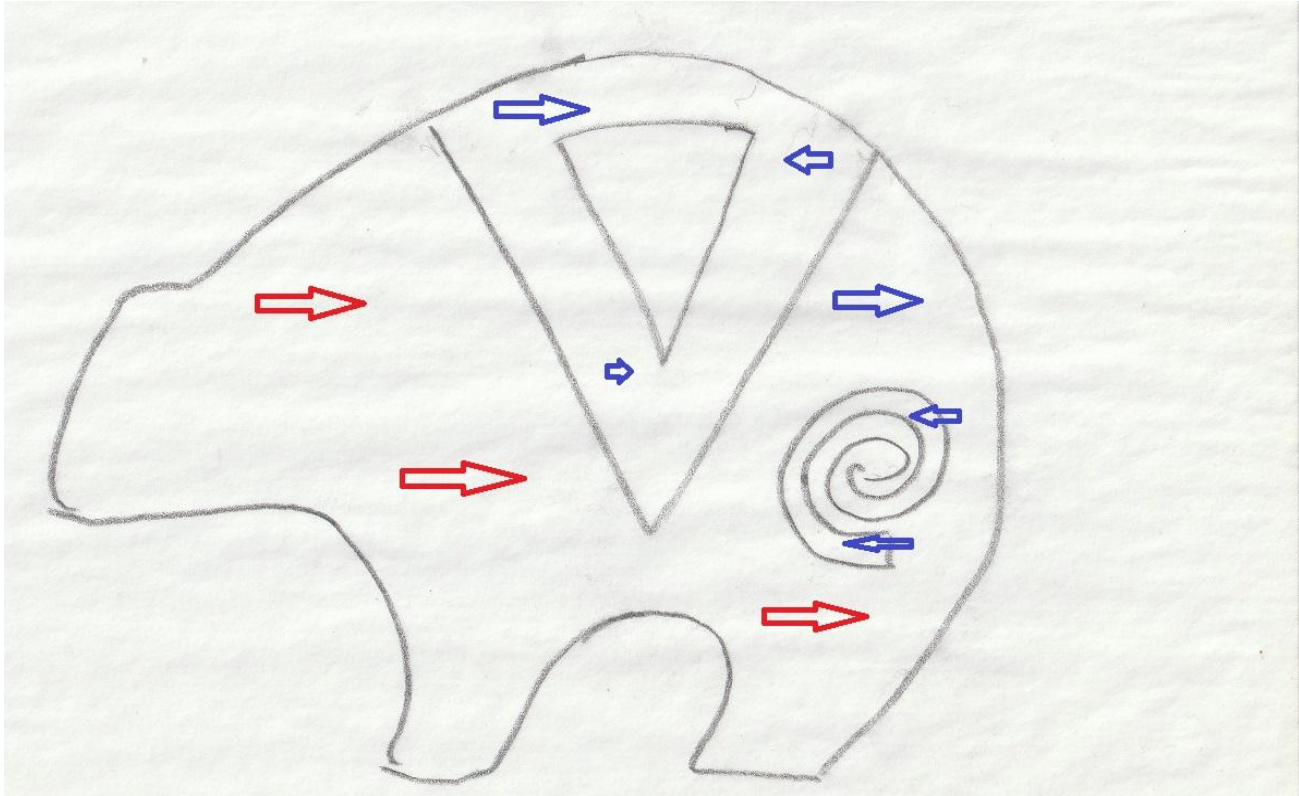
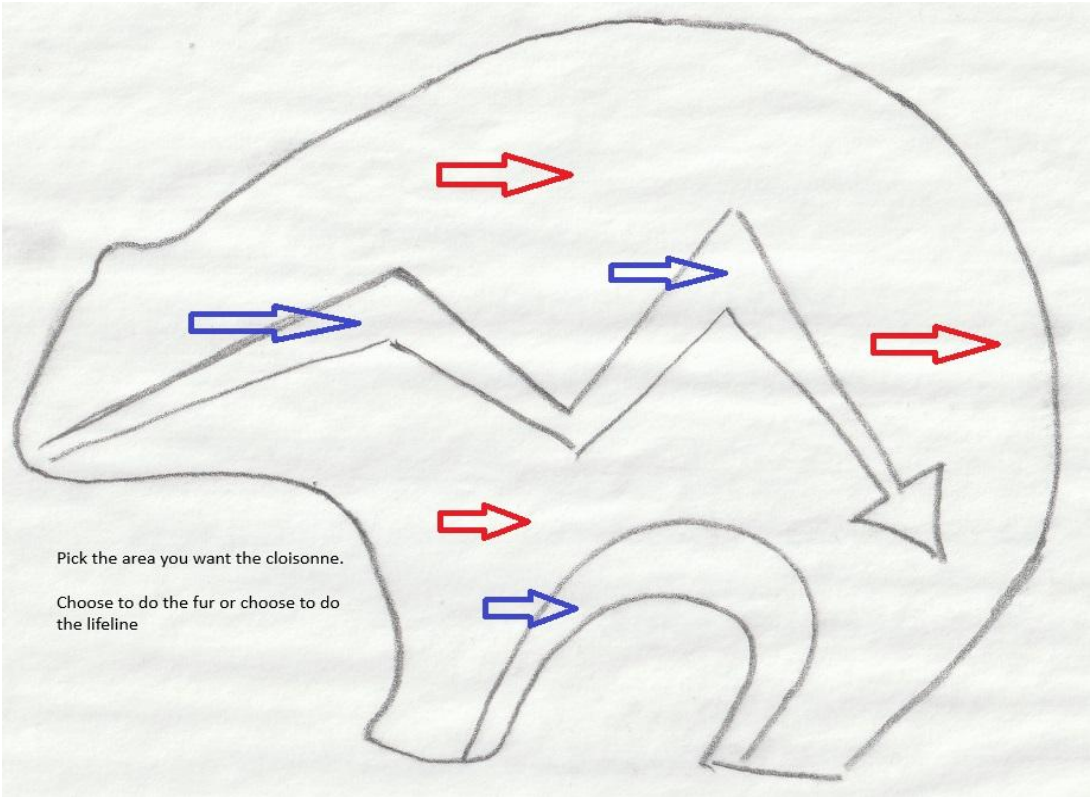
Your Subject - Transfer to the Gourd



Areas To Relief Carve (Black) and Location of Cloisonne Powder (Red)
Slide 7 Shows the Ideal Areas To Carve



Cloisonne In The Blue (only) or In The Red (only)



Do Not Emboss this Area If You Are Carving Later
Note: Horns Are Formed With Epoxy Sculpt

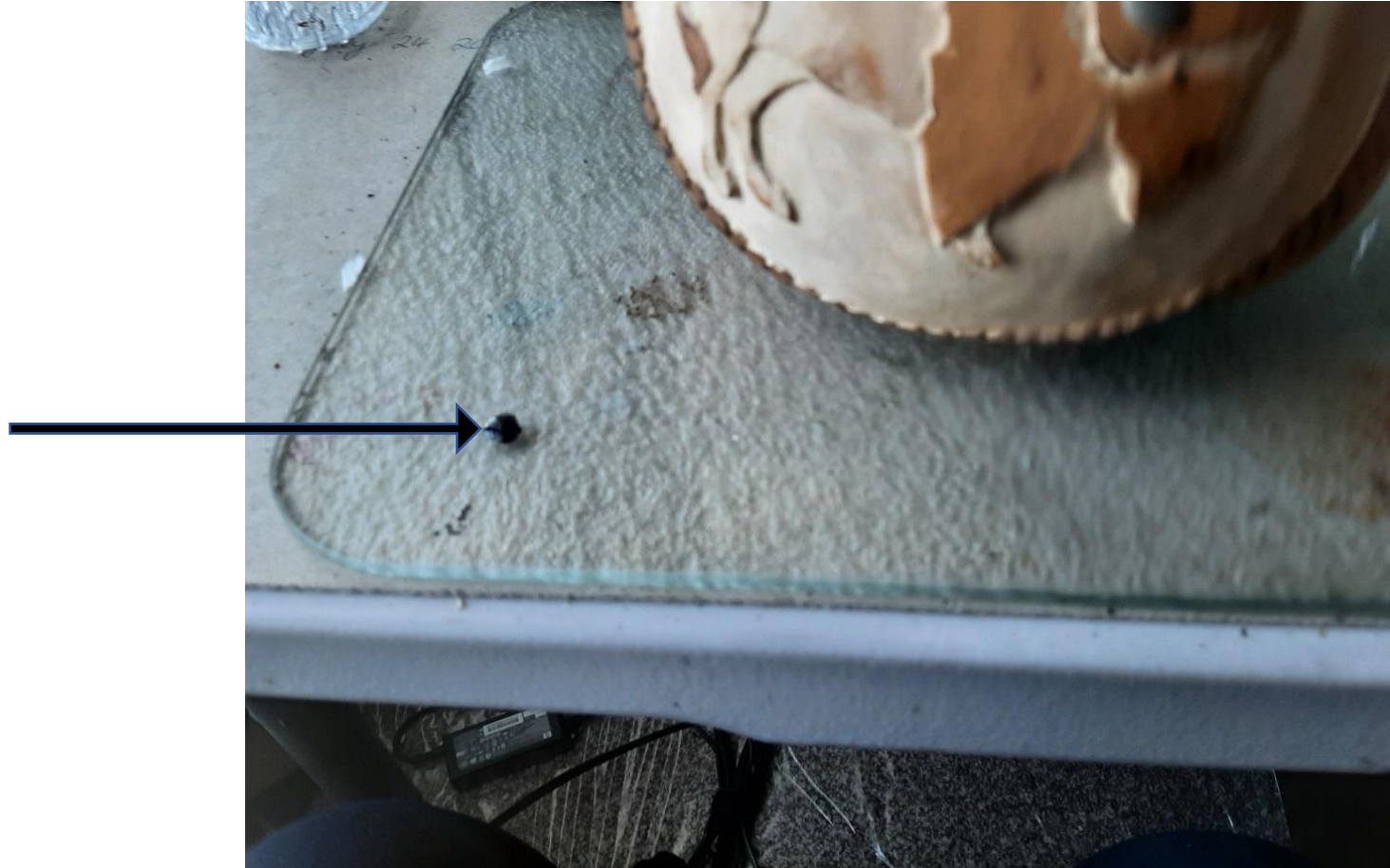


Burn Your Lines

- Set Your Burner to a Medium Heat
- Burn Over the Transfer Lines of Your Subject (Do Not Make Real Dark Lines)

Heat Activated Glue – Only Takes a Drop or Two

Glue Comes in Black or Clear



Pick The Areas To Emboss, Apply Glue

This Took 1.5 drops of Glue



Apply Glue Where Cloisonne is Indicated. Sprinkle Cloisonne Power onto the "Wet" Glue. Heat the Cloisonne to Achieve as Much Effect as Desired.

Applying Embossing Powder

Choose Color (Remember, You Can Combine Two or More Colors)

Place Paper Under Project

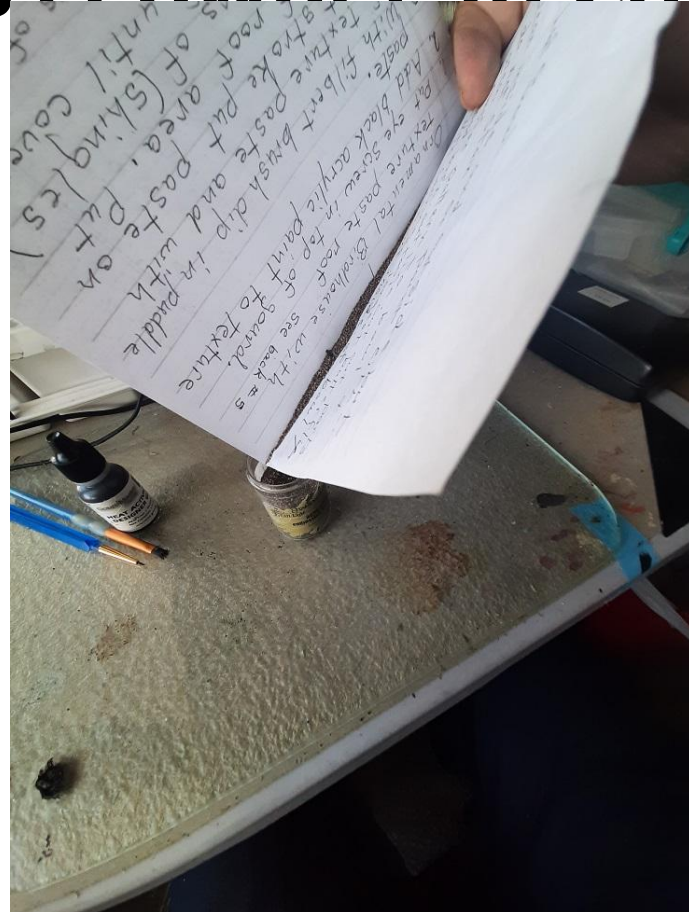
Use Brush or Sprinkle With Fingers – Do not touch brush to glue, just tap the shaft and powder will fall onto the glue area. You can also sprinkle powder like salt.



Tap the Gourd To Remove Excess Powder

Tap the Brush To Remove All Powder

Return Excess Powder To Container



Apply Heat To The Embossed Area – More Heat Equals Bigger Bubbles – See Next Slide



Heat Effects

More Heat



Less Heat

Use Layering to Achieve More Dimension

- Add Glue and Additional Powder Right on Top of the First Layer



If You Carve, Seal the Carved Area Before Applying Ink or Paint



Finished Piece



Open Range

Make A Story Board For Future Reference

