



Rim Carving Technique

BY

BILL TARLTON

Administrative Remarks

- ▶ **Observe Safe Practices**
- ▶ **Clean Up After Class**

Tools And Other Aids

- ▶ **Carver**
- ▶ **Burrs**
- ▶ **Sand Paper**
- ▶ **Protective Gear (Eyes, Ears, Respiratory)**
- ▶ **Dust Collection**
- ▶ **Pencil, Compass, Ruler**

Not The Primary Feature, but used to enhance





The Process (lecture)

1. **Carve (define) outer lines**
2. **Remove the skin between the lines**
 1. **Only take away the skin (need thickness for dimension)**
3. **Sand down area where skin was removed**
4. **Draw in filigree areas with pencil**
5. **Cut out filigrees**
6. **Carve areas around each filigree (stipple or not)**
7. **Optional Cholla look**



**Cut and define outer perimeter
between 1/16" to 1/8" deep**

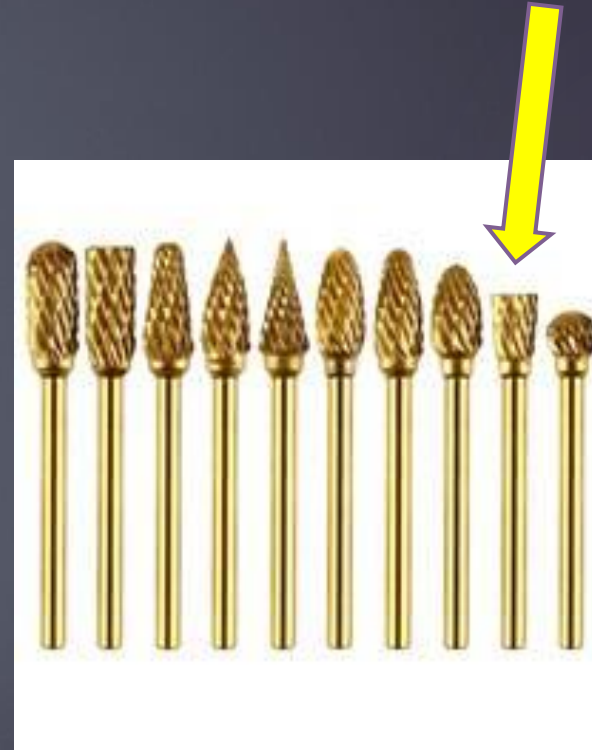
Filigree



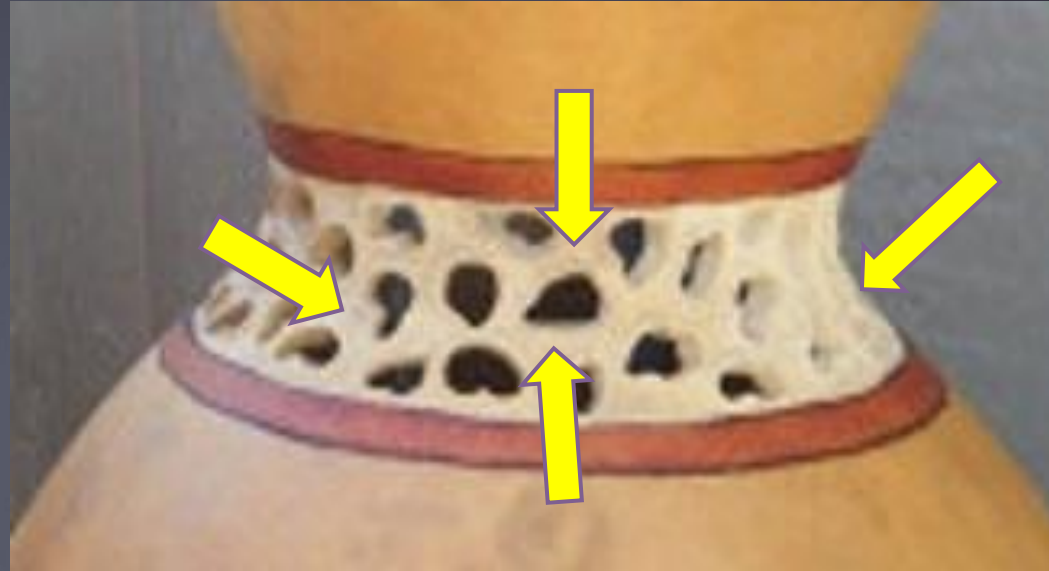
Make random filigree holes

- draw them with pencil first
- leave sufficient space for each outer band

The cholla cactus look



Remove excess pulp – Stipple or Smooth



Technique practice

- ▶ **Take Out Your Gourd Shard**
 - ▶ **Draw your outer perimeter lines with a pencil**
 - ▶ **Carve your perimeter lines (carve from inside area)**
 - ▶ **Remove the skin between the lines**
 - ▶ **Sand the pulp between the lines**
 - ▶ **Draw your filigree designs between the lines**
 - ▶ **Cut out your filigree (let the bur do the work-don't force it)**
 - ▶ **Decide if you want Cholla or simple cut**
 - ▶ **Remove excess pulp around each filigree cut out**
 - ▶ **Decide if you want stipple or smoother effect**